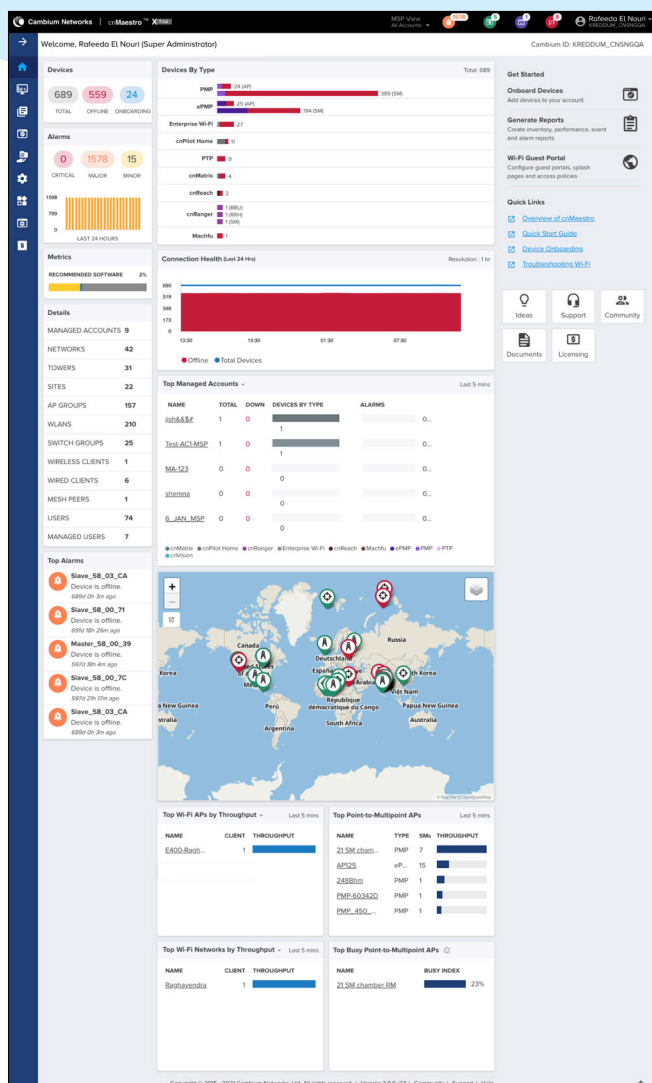


QUICK LOOK:



To serve growing market demand for advanced management and services functionality, Cambium Networks offers cnMaestro in two management tiers:

Unlicensed, free version of cnMaestro delivers the same experience as cnMaestro in the past. This license-free option delivers a disruptive Total Cost of Ownership (TCO) for organizations of all size.

Paid subscription offer that includes advanced management capabilities, Cambium Care Pro for 24x7 technical support, accelerated access to L2 engineers and regular software updates and upgrades for advanced features.

This data sheet covers the highlights of the cnMaestro platform and cnMaestro Essentials features.

cnMaestro™ Management System

Product Summary *Features marked **X** require cnMaestro X subscription*

Onboarding and Provisioning

- Zero-Touch Onboarding
- Template Configuration
- Object Configuration (Enterprise)
- Claim PMP SMs Associated with AP

Network Services

- Social Login and SMS Authentication
- Access Vouchers
- Branded Guest Access Portal **X**
- PayPal Payment Gateway **X**
- Support for Software Defined Radios (SDR) on XV3-8 Wi-Fi 6 Access Point **X**
- Mesh support for cnWave **X**
- Unique PSKs supported: 300
- Unique PSKs supported: 1,024 **X**

Wi-Fi

- Simplified Wireless LAN View
- AP Group and WLAN Configuration
- Site Support for Collocated APs

Troubleshooting and Forensics

- Tower-to-Edge View
- Technical Support Dump export
- Rogue AP Detection
- Wi-Fi Packet Capture
- ePMP/PMP Link Test
- Cambium Care Pro – 24x7 technical support, accelerated access to L2 engineers and software updates/upgrades **X**

Security

- Communication over SSL
- No Inbound Internet Access
- Not-in-traffic path
- Disaster recovery

On-Premises Scaling (8vCPU & 16GB RAM)

- Total number of devices supported: 10,000 (ePMP™, cnMatrix™, Wi-Fi, PMP, PTP, cnReach™, cnRanger™)
- Number of wireless clients supported: 150,000
- Number of WLAN and AP groups supported: System capacity
- Number of templates supported for cnMatrix, cnPilot R, ePMP and PMP devices: System capacity
- Number of Guest Portals: 500 **X**
- Max number of login events: 2,000 event records for 30 days **X**

Deployment

- Cloud-Hosted delivered as a service
- Customer-Hosted VMware OVA and OpenStack
- Amazon Marketplace AMI

Visualization

- Full Visibility Across Network
- Supports ePMP™, cnMatrix™, Enterprise and Residential Wi-Fi, PMP, PTP, cnReach™, cnRanger™
- Multiple Product Views
 - Access and Backhaul View
 - Enterprise Wireless View
 - Industrial Internet View
- Hierarchical Device Tree
- PMP/ePMP Sector Display

Configuration & Monitoring

- Redundant cloud services
- Scheduled system backup
- Automatic bulk software update
- Dedicated Device Dashboards
- Statistics and Trending
- Email Alerts
- Supporting concurrent device jobs **X**
- Configuration lock **X**
- Managed Service Provider Accounts **X**
- Support for up to 200 accounts
- High Availability (1+1) for On-Premises **X**
- Monitor Wi-Fi performance from client or AP to cnMaestro (On-Premises NMS; Cloud NMS – N/A) **X**

Data and Reporting

- Statistics Reports Exported in CSV
- Export UI Tables in CSV or PDF
- RESTful Monitoring/Provisioning API **X**
- Long-term data retention **X**
 - 2-year for FWB
 - 1-year for Enterprise and IIoT

Administration

- Role-Based Access
- Auto provisioning
- RADIUS, TACACS+, LDAP, and AD Login
- Advanced troubleshooting **X**
 - Audit logs
 - Audit syslog & Event syslog (On-Premises NMS; Cloud NMS – N/A)
- Advanced monitoring **X**
 - Session management
 - User authentication, SNMP support (On-Premises NMS; Cloud NMS – N/A)



GET STARTED at
cloud.cambiumnetworks.com

ABOUT CAMBIUM NETWORKS

Cambium Networks empowers millions of people with wireless connectivity worldwide. Its wireless portfolio is used by commercial and government network operators as well as broadband service providers to connect people, places and things. With a single network architecture spanning fixed wireless and Wi-Fi, Cambium Networks enables operators to achieve maximum performance with minimal spectrum. End-to-end cloud management transforms networks into dynamic environments that evolve to meet changing needs with minimal physical human intervention. Cambium Networks empowers a growing ecosystem of partners who design and deliver gigabit wireless solutions that just work.

cambiumnetworks.com

01252021